



Rinnai Commercial Electric Water heaters – Infnit-E series

Rinnai

Infinitt-E

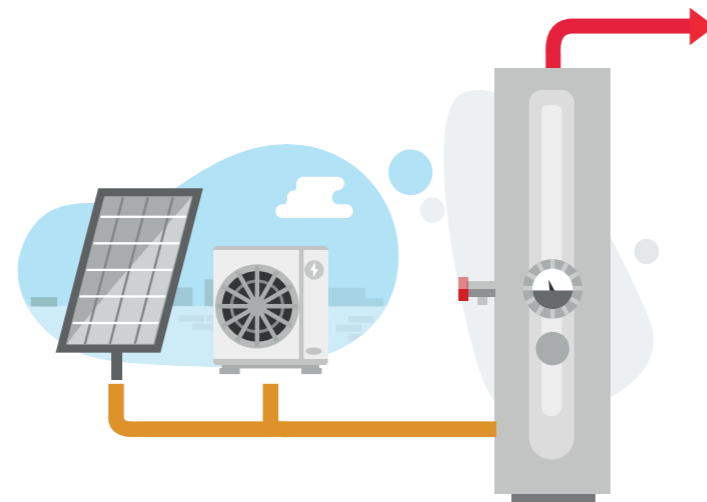


The **Infinitt-E** range is an all-electric water heater for predominantly commercial hot water applications. The appliance is designed with flexibility in mind as it is fitted with between one and six titanium elements.

The KW rating within the Infinitt-e range is scalable from 12kw to 72kw ensuring that the appliances are suitable for a wide variety of applications. The cylinder is manufactured with stainless steel adding durability and enabling extensive warranties.

The use of stainless steel also makes the Infinitt-E range lightweight and easily manoeuvrable when compared to glass-lined variants. The empty weight of the Infinitt-e is 54kg maximum. Another added feature is that all electrical elements can be fitted to a single-phase supply, should site limitations dictate.

Each element within the appliance range has its own controllable thermostat with a temperature range of between 49 and 90 degrees Celsius, all elements are fuse protected and there is no need for expensive sacrificial anodes thanks to the tough stainless-steel build.



Technical Specifications

		Infinitt-E12	Infinitt-E24	Infinitt-E36	Infinitt-E48	Infinitt-E60	Infinitt-E70
Electrical Data							
Input	KW	12	24	36	48	60	72
Elements	-	1	2	3	4	5	6
Element material		Titanium					
Power Supply	VAC/Hz	Single phase / three phase / 400(-15/+10%)/50 (+1HZ) 230(-15/+10%)					
General							
Empty Weight	Kg	54					
Maximum weight	kg	350					
Storage capacity	l	305					
Maximum Working pressure	kPa (Bar)	600 (6) bar					
Draw-off							
Tcold = 10oc / Tset = Tmax							
1st hour flow rate @ 44°C rise (l/hr)	l/h	540	775	1010	1245	1479	1714
Continuous flow rate @44 C rise (l/hr)	l/h	235	470	705	940	1174	1409
Storage Recovery @44 rise in Min	Min.	78	39	26	19	16	13
1st hour flow rate @ 50°C rise (l/hr)	l/h	512	718	925	1132	1338	1545
Continuous flow rate @50 C rise (l/hr)	l/h	206.7	413.4	620.1	826.8	1033.5	1240.2
Storage Recovery @50 rise in min	Min.	89	44	30	22	18	15
1st hour flow rate @ 55°C rise (l/hr)	l/h	493	681	869	1057	1245	1432
Continuous flow rate @55 C rise (l/hr)	l/h	187.9	375.8	563.7	751.6	939.5	1127.4
Storage Recovery @55 rise	Min.	97	49	32	24	19	16
General Data							
Shipping weight	kg	60	60	60	60	60	60
Width	Mm	576	576	576	576	576	576
Height	Mm	2026	2026	2026	2026	2026	2026
Cylinder warranty	Years	10	10	10	10	10	10

Operational Performance

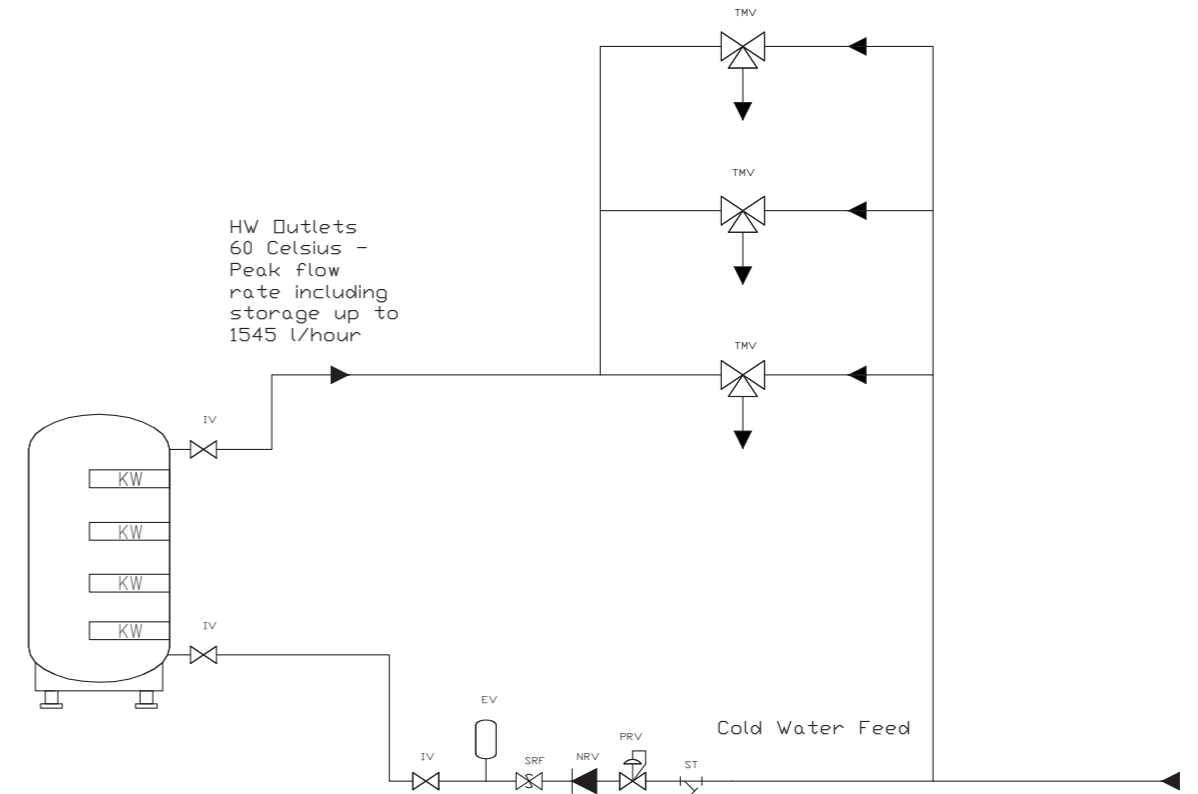
		Infinet-E12	Infinet-E24	Infinet-E36	Infinet-E48	Infinet-E60	Infinet-E70
Electrical Data							
Input	kW	12	24	36	48	60	72
Elements		1	2	3	4	5	6
30 min @44 Rise with storage	l	422	540	657	775	892	1010
60 min @44 Rise with storage	l	540	775	1010	1245	1479	1714
90 min @44 Rise with storage	l	657	1010	1362	1714	2067	2419
120 min @44 Rise with storage	l	775	1245	1714	2184	2654	3124
Continuous flow @44 Rise	l/min	4	8	12	16	20	23
Heating up time @44 Rise	Min.	78	39	26	19	16	13
30 min @50 Rise with storage	l	408	512	615	718	822	925
60 min @50 Rise with storage	l	512	718	925	1132	1338	1545
90 min @50 Rise with storage	l	615	925	1235	1545	1855	2165
120 min @50 Rise with storage	l	718	1132	1545	1959	2372	2785
Continuous flow @50 Rise	l/min	3.4	6.9	10.3	13.8	17.2	20.7
Heating up time @50 Rise	Min.	89	44	30	22	18	15
30 min @55 Rise with storage	l	399	493	587	681	775	869
60 min @55 Rise with storage	l	493	681	869	1057	1245	1432
90 min @55 Rise with storage	l	587	869	1151	1432	1714	1996
120 min @55 Rise with storage	l	681	1057	1432	1808	2184	2560
Continuous flow @55 Rise	l/min	3.1	6.3	9.4	12.5	15.7	18.8
Heating up time @55 Rise	Min.	97	49	32	24	19	16

Ecodesign Specifications

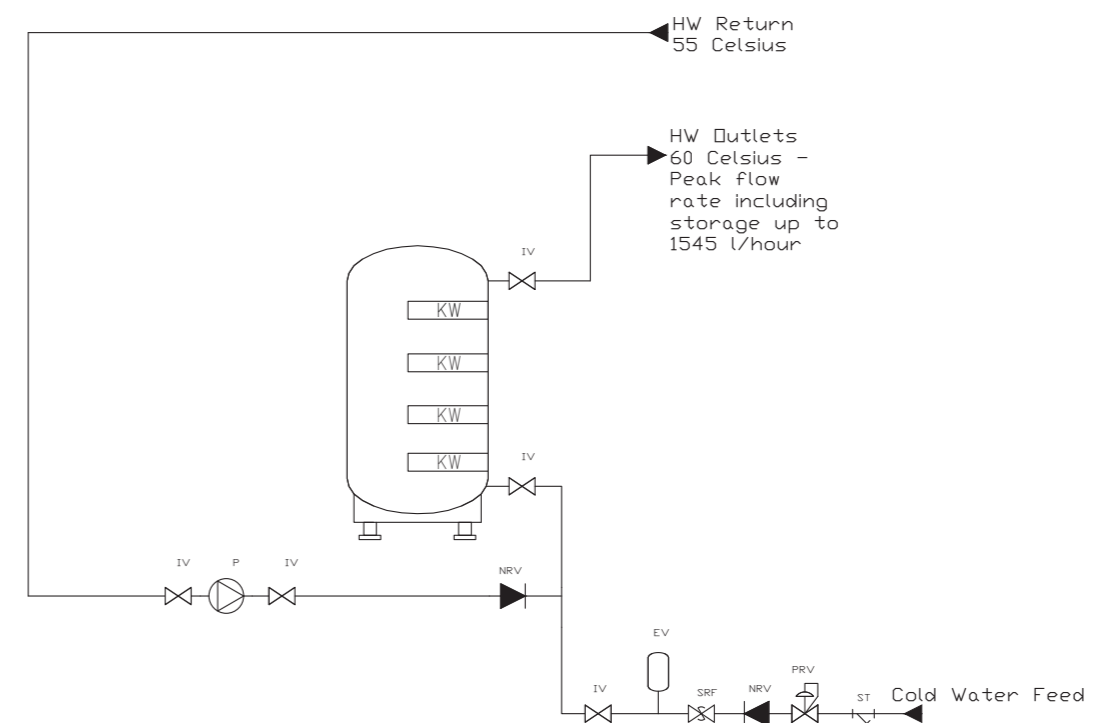
		Infinet-E12	Infinet-E24	Infinet-E36	Infinet-E48	Infinet-E60	Infinet-E70
Energy Labelling							
Load Profile		XL	XL	XL	XL	XL	XL
Energy Labelling		D	D	D	D	D	D
Annual Electricity Consumption (AEC)	kWh	4672	4672	4672	4672	4672	4672
Daily Electricity Consumption	kWh						
Annual Fuel Consumption (AEC)	GJ GCV	16.8	16.8	16.8	16.8	16.8	16.8
Daily Fuel Consumption	kWh GCV						
Nitrogen Dioxide emissions (NO2)	Mg/ kWh GCV						
Mixed Water of 40 degree celsius	Ltr						
Sound Power Level	15db	15db	15db	15db	15db	15db	15db

Installation Schematics

Direct electric cylinder – direct outlet configuration using TMV



Direct electric cylinder with secondary return



Rinnai UK, 9 Christleton Court, Runcorn, WA7 1ST

Tel: 0300 373 0660 / www.rinnaiuk.com

Rinnai London, The Building Centre, 26 Store Street, London WC1E 7BT

Tel: 0300 373 0660 / www.rinnaiuk.com



Rinnai UK Ltd



@rinnai_uk



Rinnai UK

Rinnai